

TOYAMA BAY CRUISING



Let's enjoy the panoramic view of Tateyama Mountain Range
from Toyama Bay on the sightseeing tour boat "Kirarin".



2023
5/13 sat. ~ 11/26 sun.

*There's a possibility the schedule may be modified.

● Reception: Hotaruika Museum ● Departure point: Namerikawa Fishing Port

※Product image for illustration purposes only.※Depending on the weather and the condition of the sea, the course may be changed or canceled.



● Contact

 WAVE Namerikawa Co., Ltd. tel.076-476-9307

410 Nakagawara, Namerikawa, Toyama, 936-0021, Japan <https://www.hotaruikamuseum.com/cruise> E-mail:kankousen@hotaruikamuseum.com

 kankousenKirarin

TOYAMA BAY CRUISING



2023 5/13sat.~11/26sun.

*There's a possibility the schedule may be modified.

- Capacity : 35 people
(time for application is 20 minutes before the departure)
- Closed: Tuesdays; if Tuesday is a national holiday, we will be OPEN, and close on Wednesday.

Highlight

- Toyama Bay : a member of World's Most Beautiful Bays Club
 - Magnificent mountains : Tateyama Mountain Range (Mt. Oyama, Mt. Tsurugi, Mt. Dainichi and others)
 - Tateyama Kurobe Geopark
 - Alluvial fan of Hayatsuki River and 10 bridges from the estuary to the upstream (Hayatsuki River Course)
 - Off-shore fixed-net for firefly squid (from April to June)
- ※Please check the sightseeing course at reception desk.

Schedule	Departure Time	
	1st boat	10:00 a.m.
	2nd boat	11:00 a.m.
	3rd boat	1:00 p.m.
	4th boat	2:00 p.m.
5th boat	3:00 p.m.	

※Adult: High school age and over
Child: Junior high school age or younger
Children between 3 and 7 years old can ride free of charge.
Children under 3 years old are not permitted to ride.

※Group: More than 15 people
※Please check the details on the website.

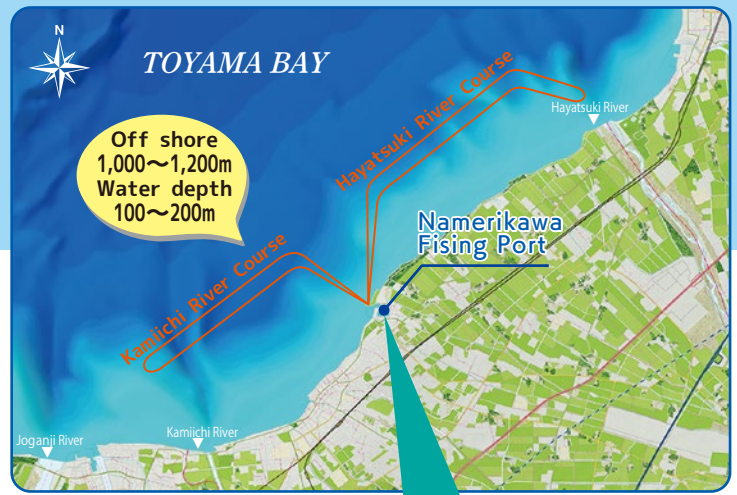
Normal Fare	Personal		Group	
	Adult	1,200yen	Adult	1,080yen
Child	600yen	Child	540yen	

◇Chartering
We will make a charter service or a special service depending on your request. Please feel free to ask us.

Charter Fare	For 1 hour	For 3 hours
	25,000yen	40,000yen

•About the sightseeing boat "Kirarin"
The name Kirarin is the same as the official character of Namerikawa city.
Length: 14.75m, Full width: 4.08m, Drainage: 18t, Maximum speed: 36 knots [Usually it sails at from 12 to 20 knots.]

※multiply 25,000 yen by number of times using the cruising service
※tax included



Information

Museum you can learn firefly squids!

Hotaruika Museum

tel.076-476-9300

Open: 9:00 a.m. ~5:00 p.m.
the final admission is at 4:30 p.m.
Closed: Every Tuesday of 6/1~3/19
(Next day when Tuesday happens to be a national holiday) and New Year's holiday
Open from 3/20 to 5/31

Admission fee:

Firefly squid
"Luminous lights show"

The plankton called Ryugu
Firefly "Luminous lights show"

Group	2022/3/19~5/31		6/1~3/19	
	Adult	670 yen	Adult	520 yen
Child	360 yen	Child	260 yen	
Personal	Adult	820 yen	Adult	620 yen
	Child	410 yen	Child	310 yen

※Group: More than 20 people



Restaurant

Panorama Restaurant Kousai

Hotaruika Museum 2F tel.076-476-1370

Enjoy by dining and seeing right before your eyes.
Taste the fortunes of Toyama while looking the grandeur Sea right before your eyes.



Open:
11:00 a.m. ~ 9:00 p.m. (L.o. 8:30 p.m.) 3/1 ~ 8/31
11:00 a.m. ~ 5:00 p.m. (L.o. 4:30 p.m.) 9/1 ~ 2/28
Closed: Every Tuesday of 6/1~3/19
(Next day when Tuesday happens to be a national holiday) and New Year's holiday
Open from 3/20 to 5/31

Shop/cafe

Souvenir Shop Market Mall

Open: 9:00 a.m.~ 5:00 p.m.

A great selection of deep-sea water products!
You can get various firefly squid processed products.

Michi cafe wave

Open: 10:00 a.m. ~ 4:00 p.m.

You can enjoy Hotaruika (firefly squid) burger, deep-sea water soft serve ice cream, coffee in deep-sea water, and more.

